
Large-scale Physical Model Tests of Micropile Stabilized Slopes

J. Erik Loehr and Andrew Boeckmann

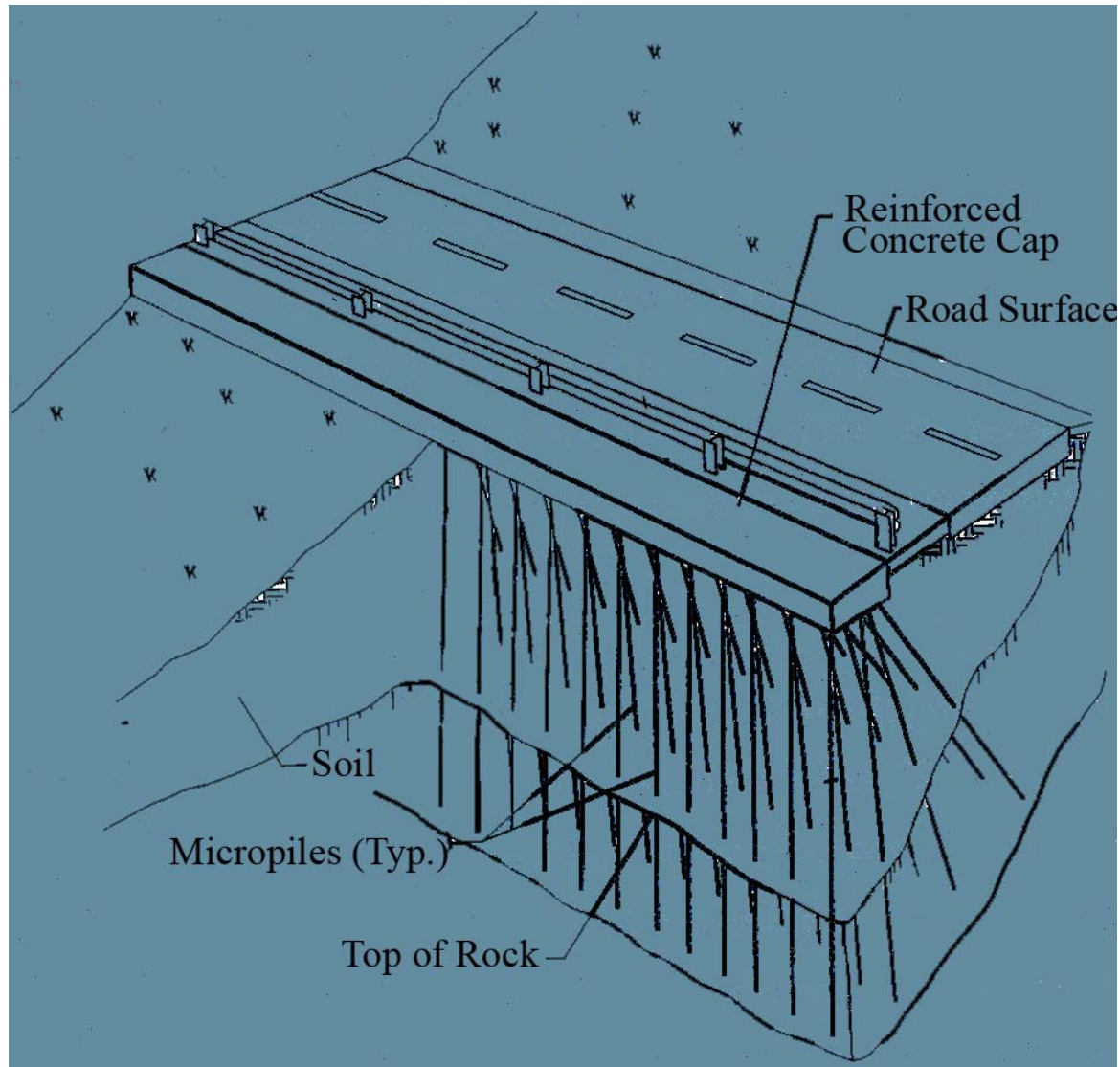
University of Missouri – Columbia

John J. Deeken

Black and Veatch



Stabilization Technique



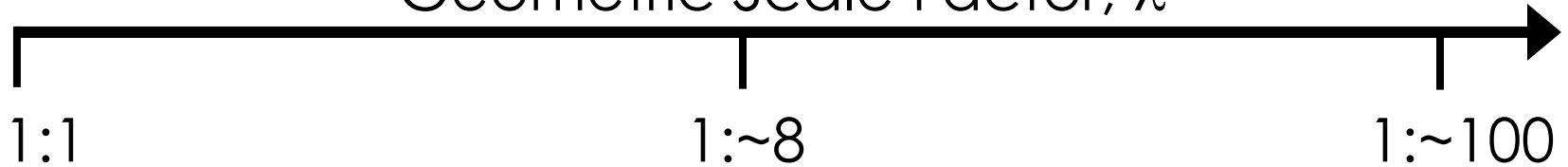
Motivation

- How is force developed within reinforcing members?
- What is the interaction between the soil and the reinforcing members?
- How does geometric arrangement affect load transfer and limit loads?
- What group or network effects exist?



Research Methods

Geometric Scale Factor, λ



Field Testing

Actual performance, but

- no control of environmental conditions
- remote test sites
- failure data rare

Large-scale Physical Modeling

Centrifuge Testing

Reproduce stresses, but

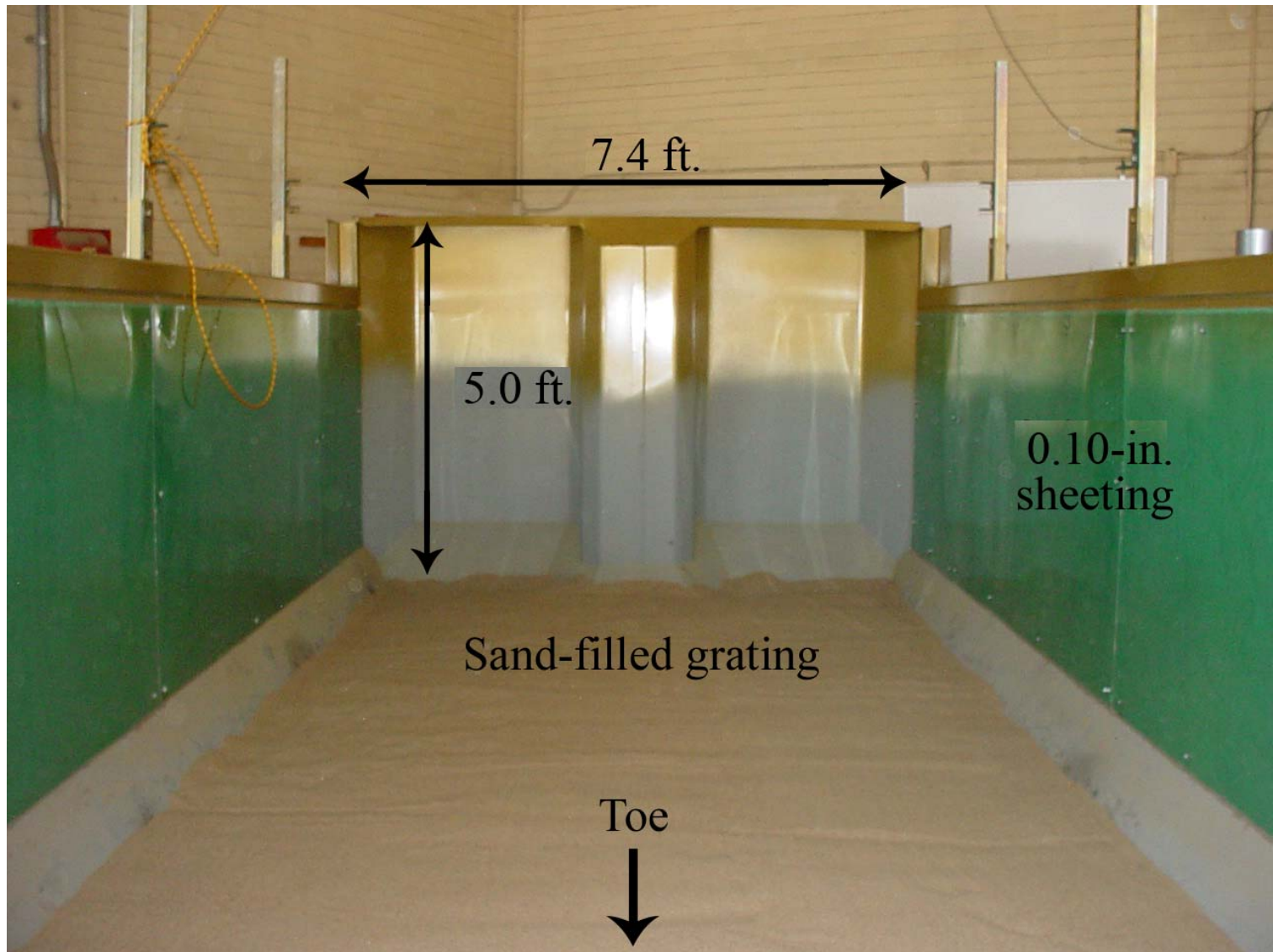
- cannot model construction techniques
- member/soil interaction questionable



Modeling Device

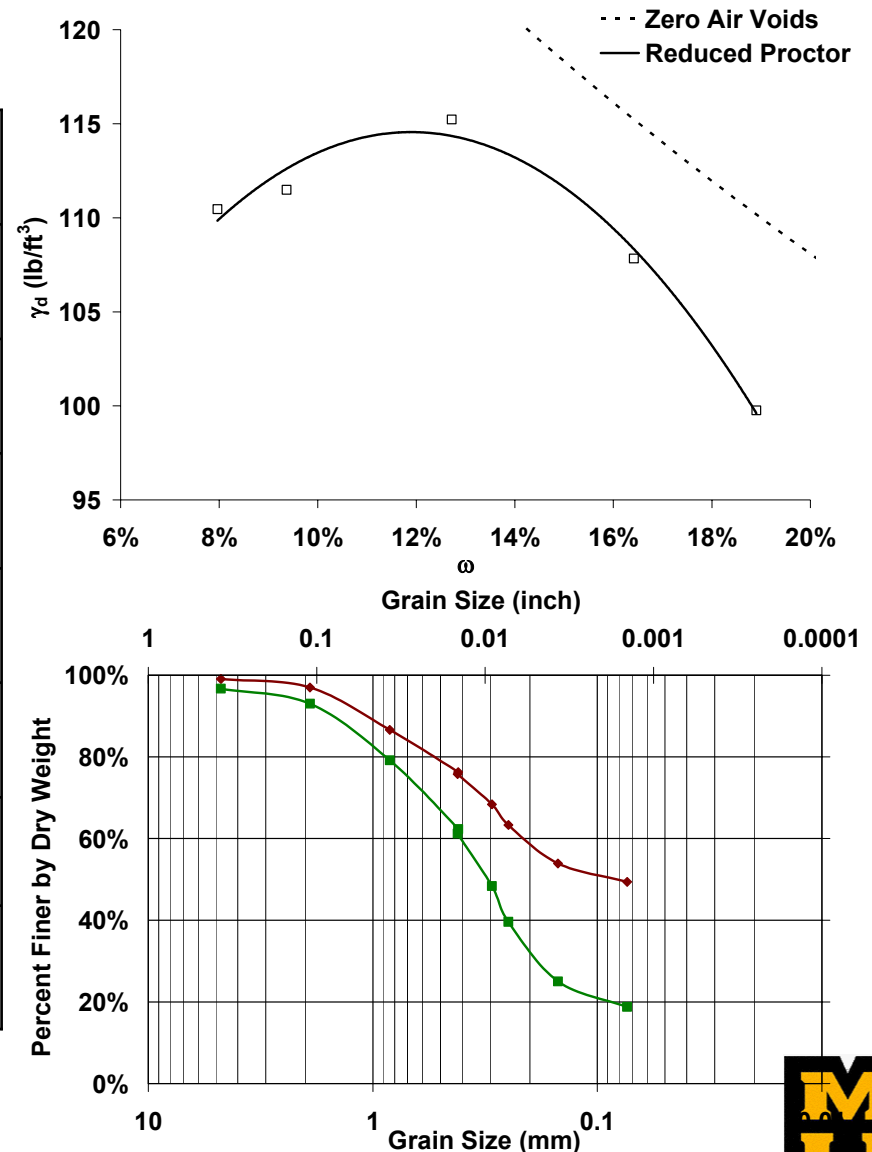


Model Container



Model Soil

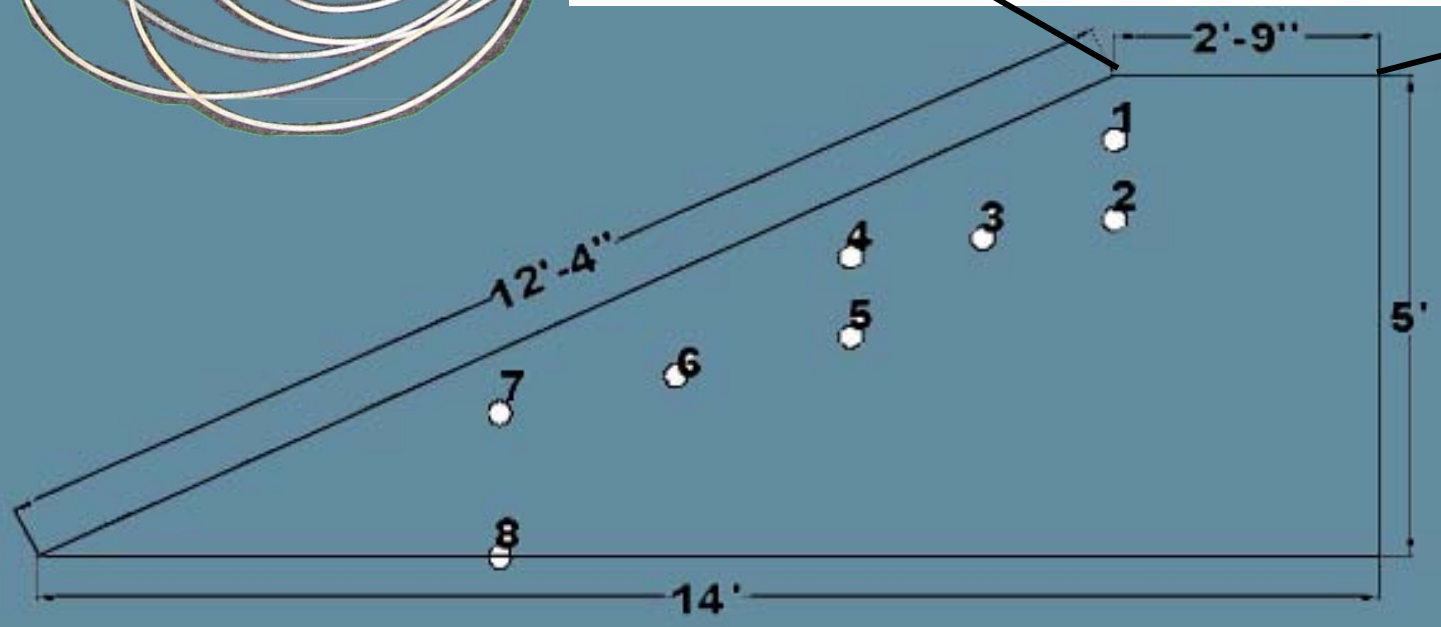
Liquid Limit	23
Plastic Limit	14
Plasticity Index	9
Organic Content	1%
Fines Content	19%
γ_{d-max}	115 pcf
W_{opt}	13%
ϕ'	33°



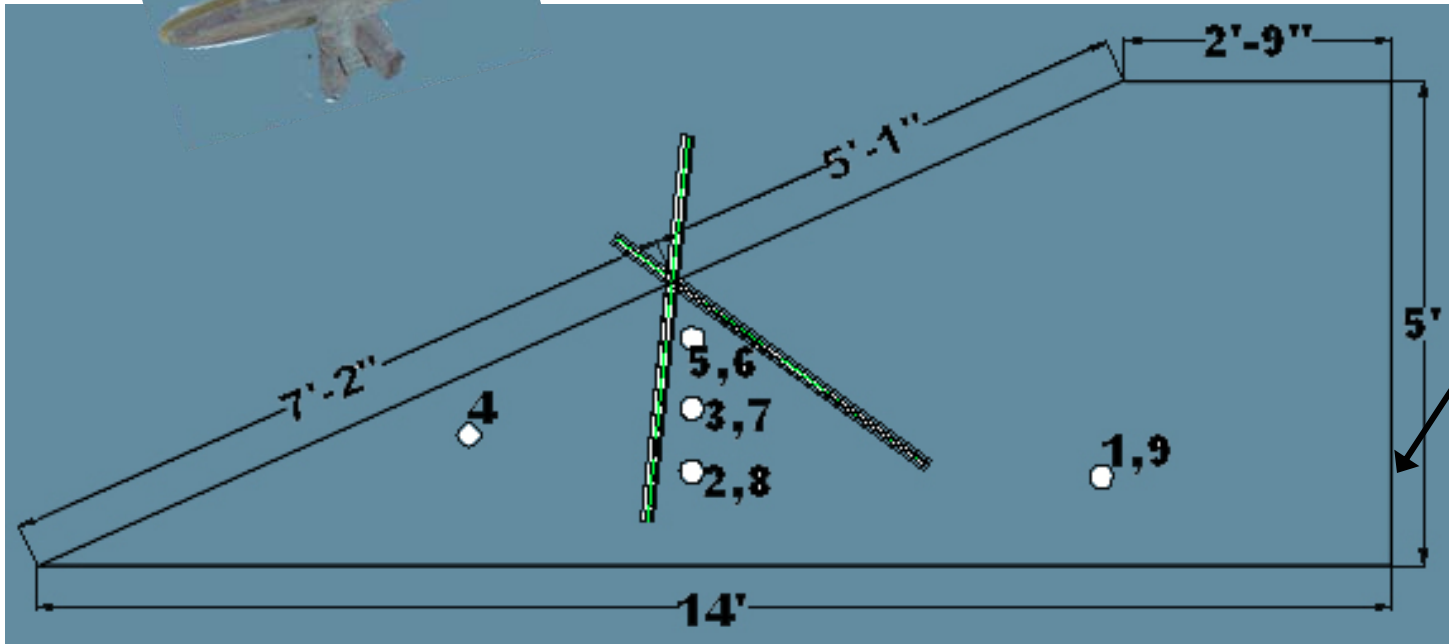
Pore Pressure Control System



Instrumentation: Pore Pressure

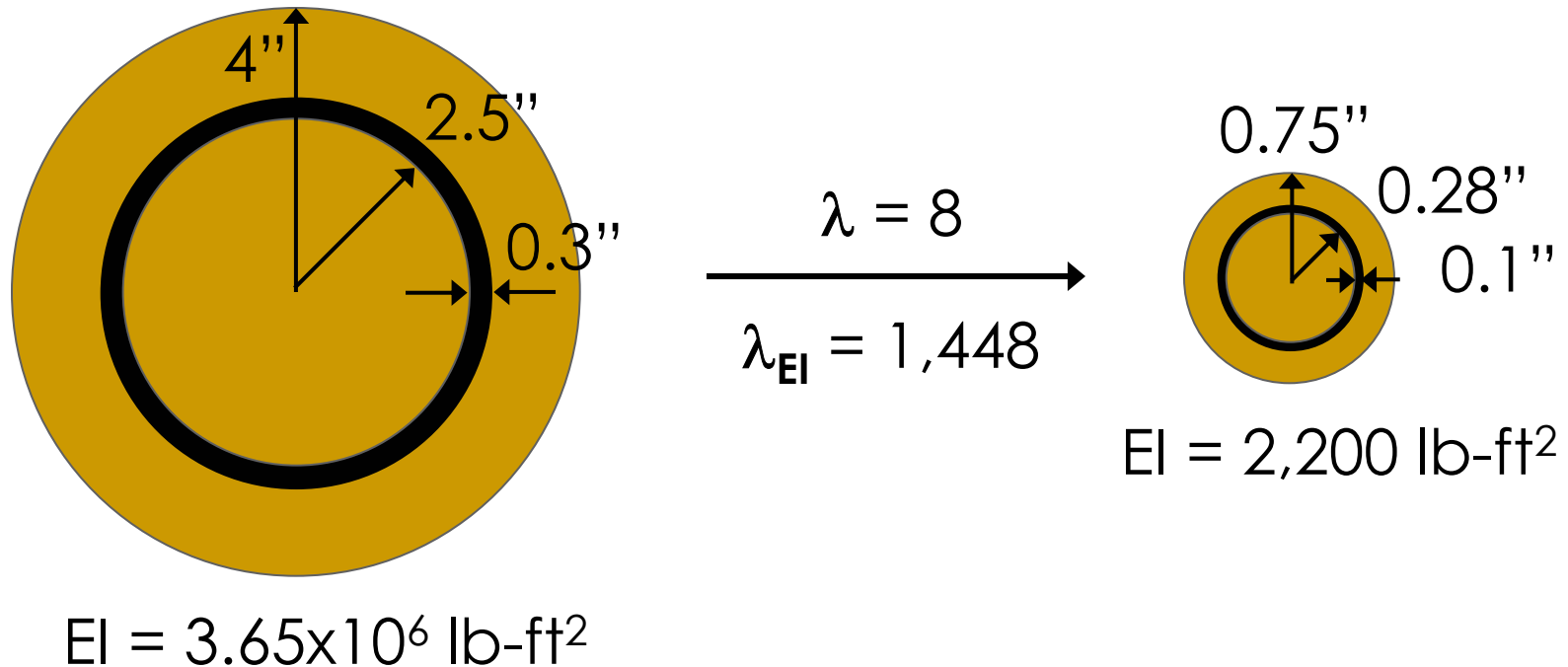


Instrumentation: Displacement



Reinforcement & Similitude

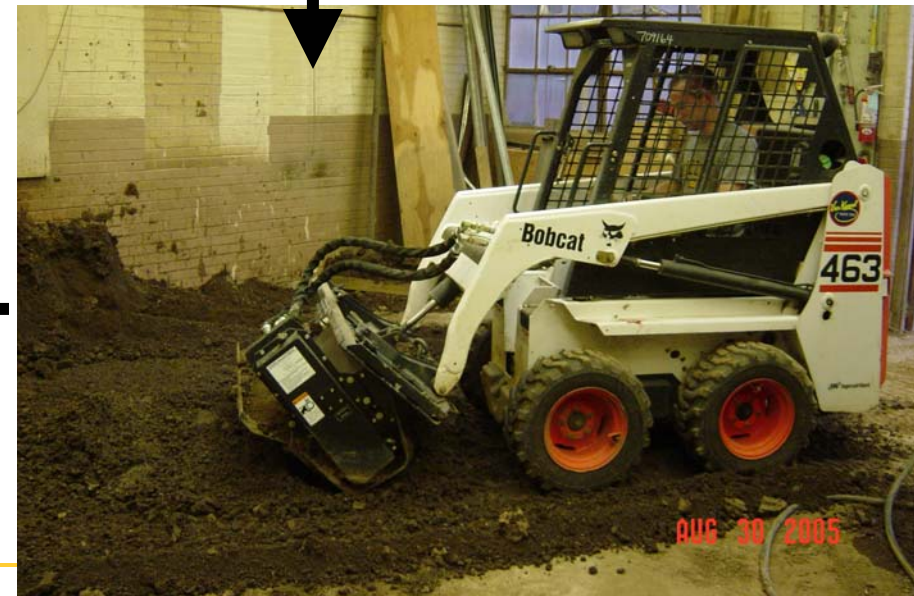
- Can't scale stresses, but can scale reinforcement stiffness appropriately:



Instrumentation: Strain Gages



Construction



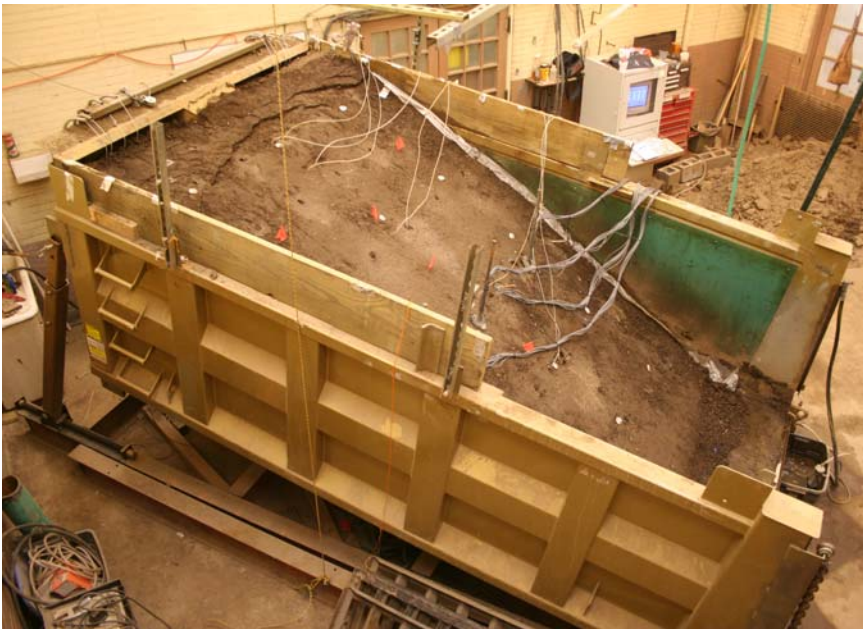
Construction: Model Micropiles



Construction: Model Micropiles



As-constructed



Testing



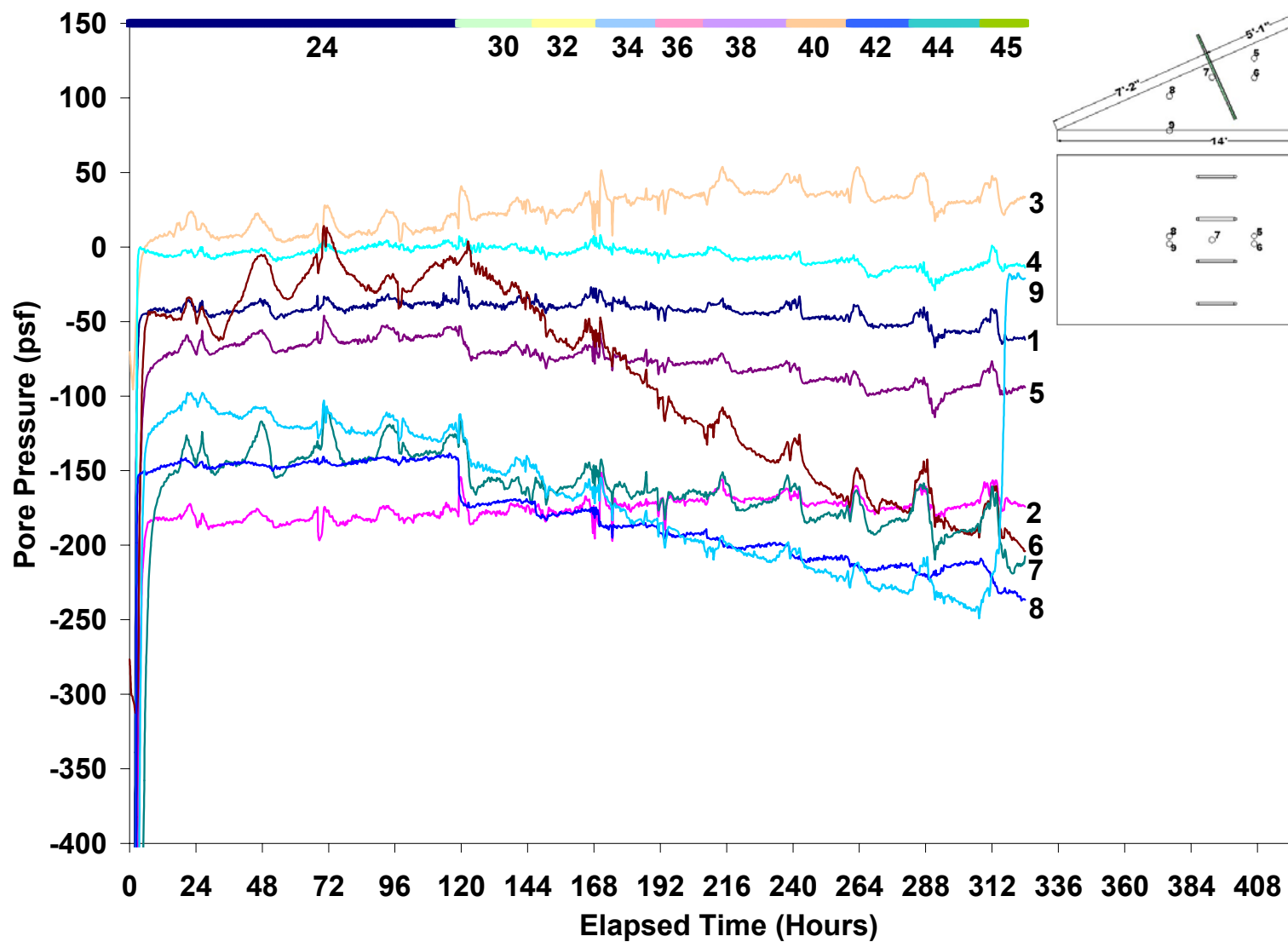
Failure!



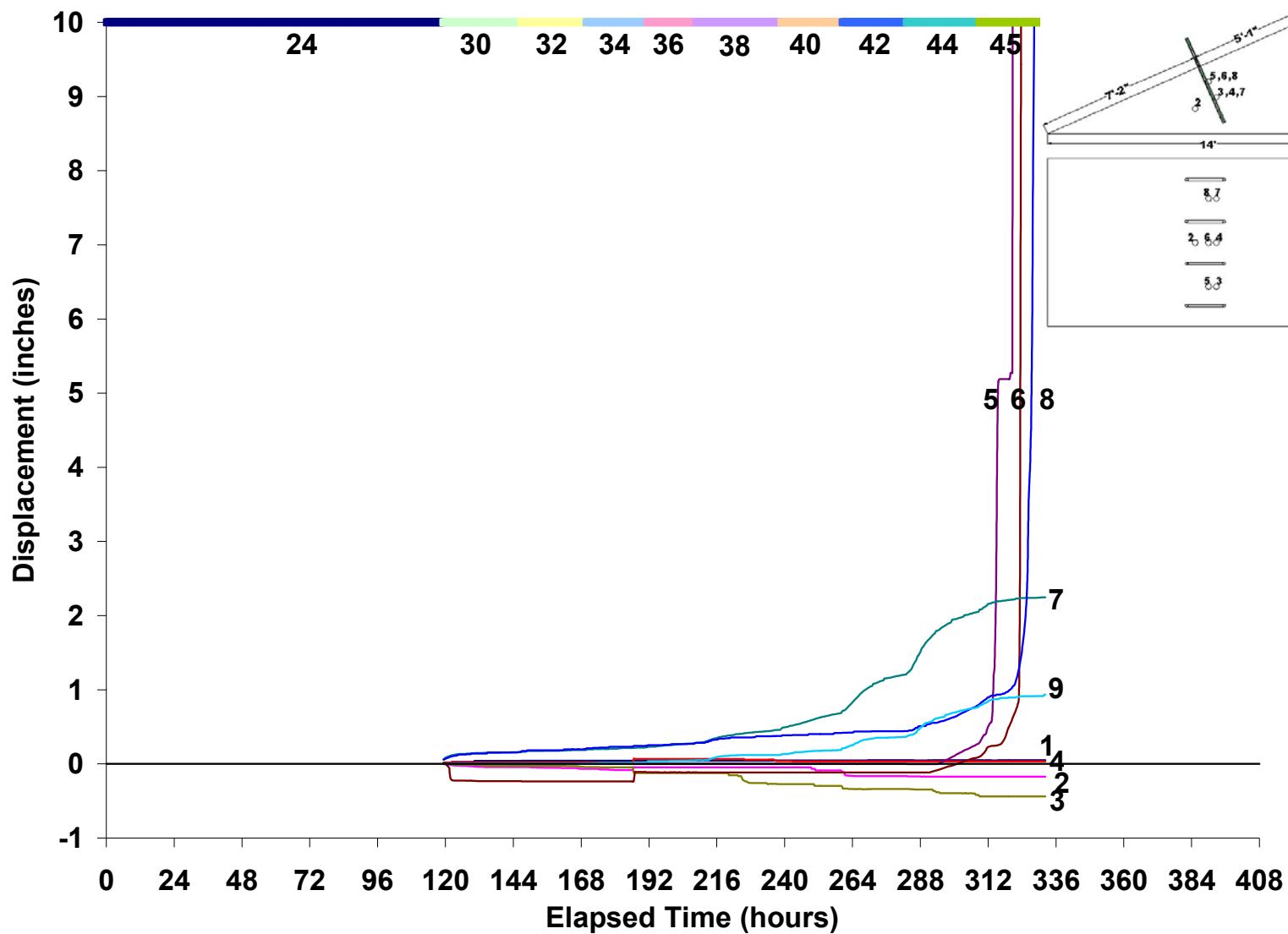
Time Lapse Movie Clip



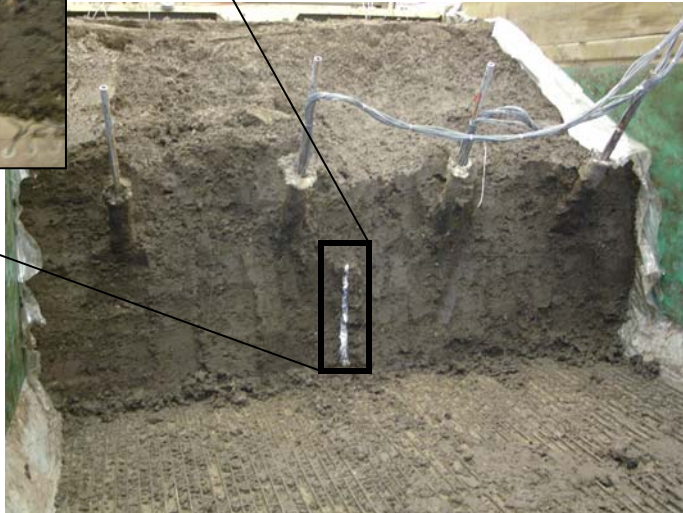
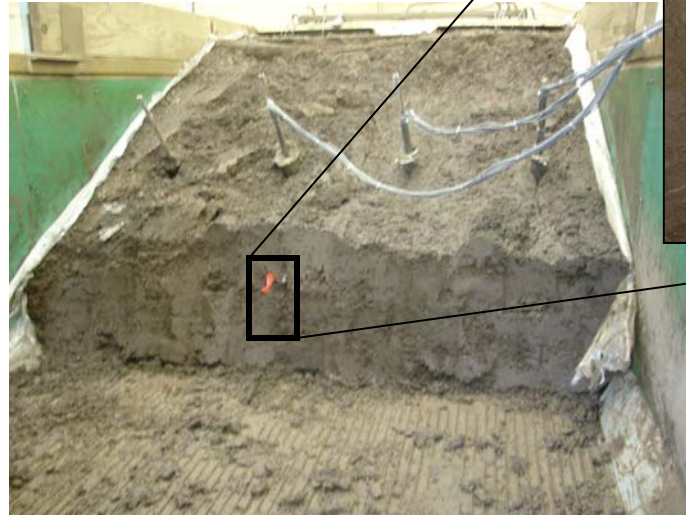
Model Performance – pore pressures



Model Behavior - deformations



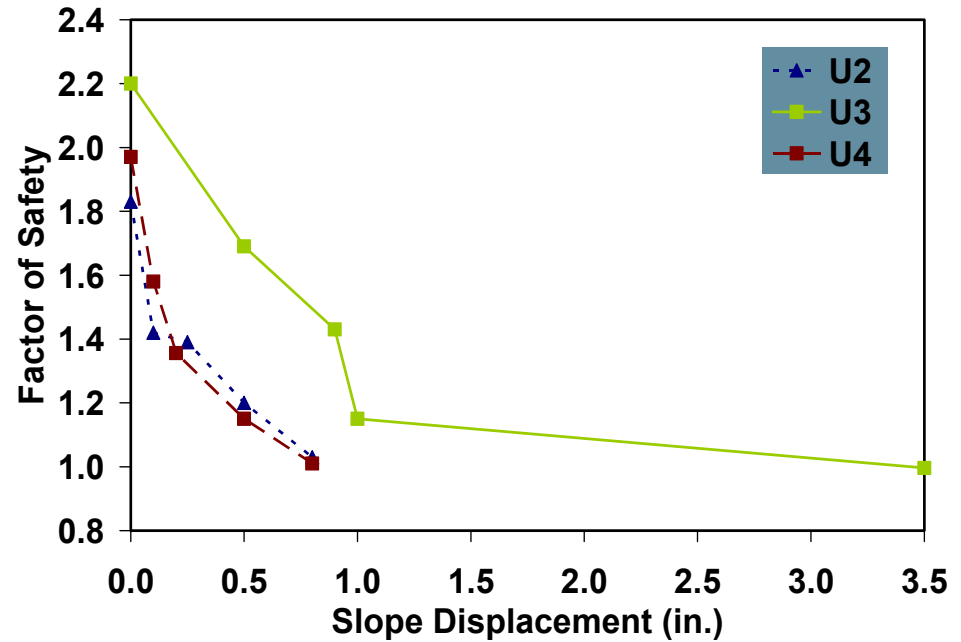
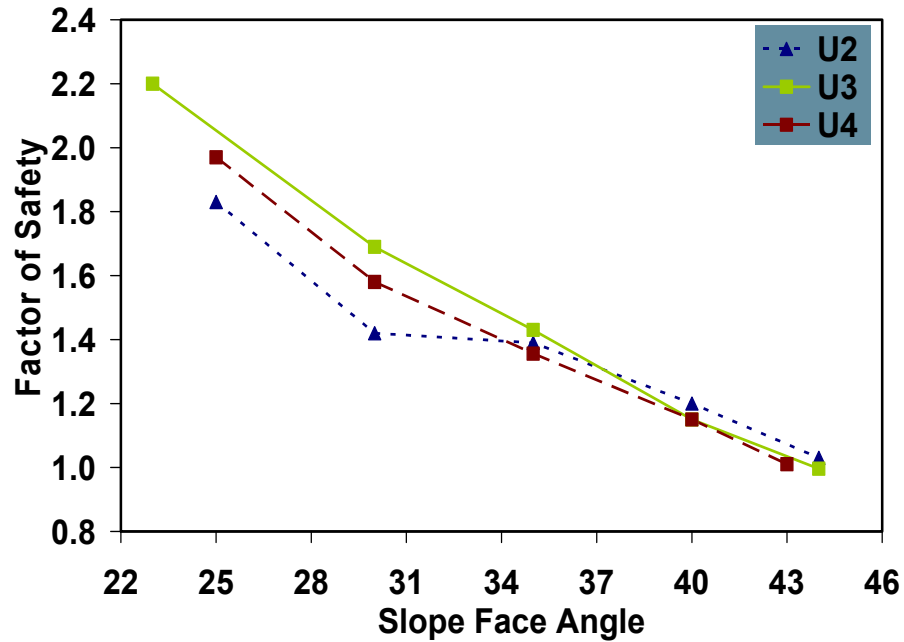
Forensics



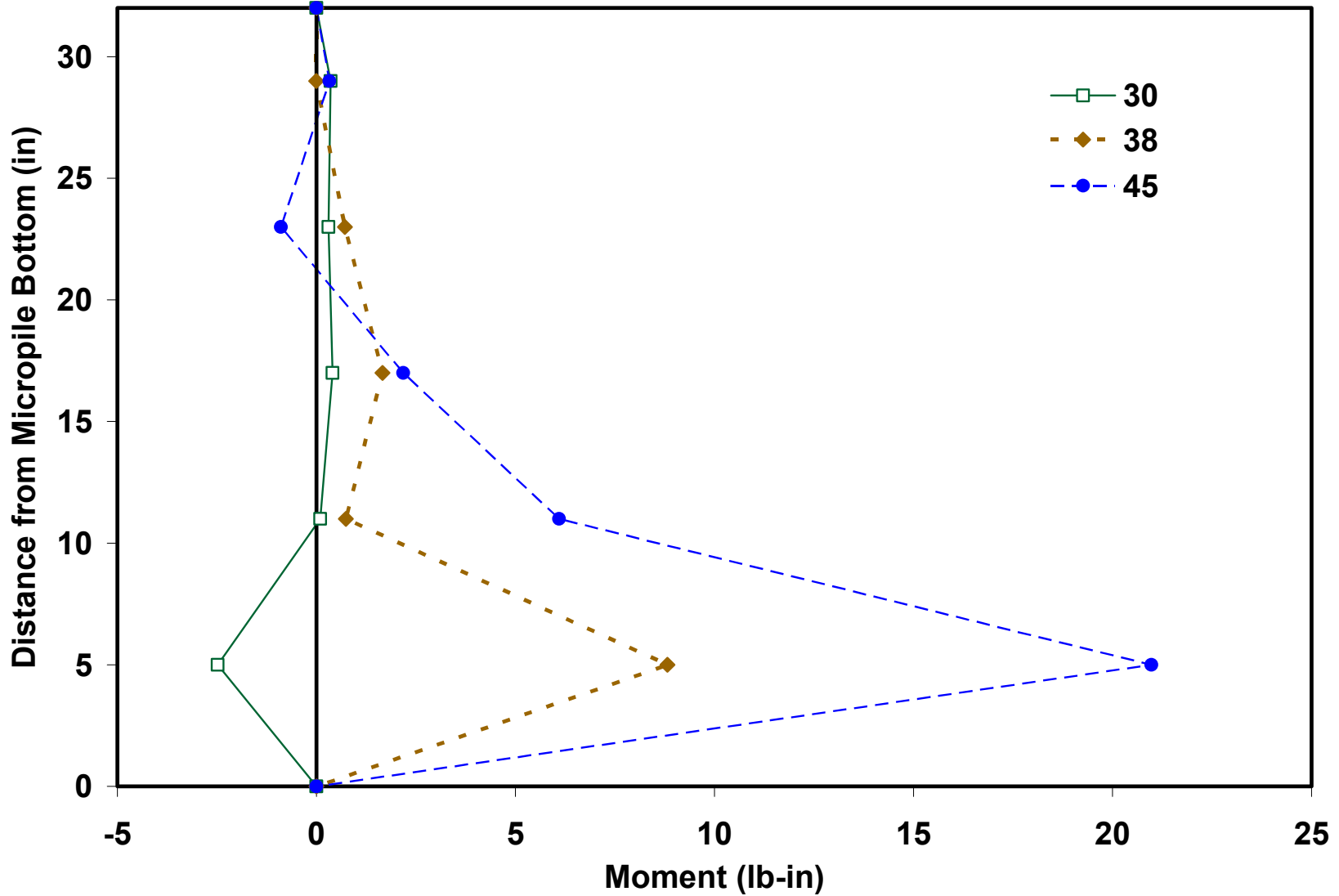
Forensics



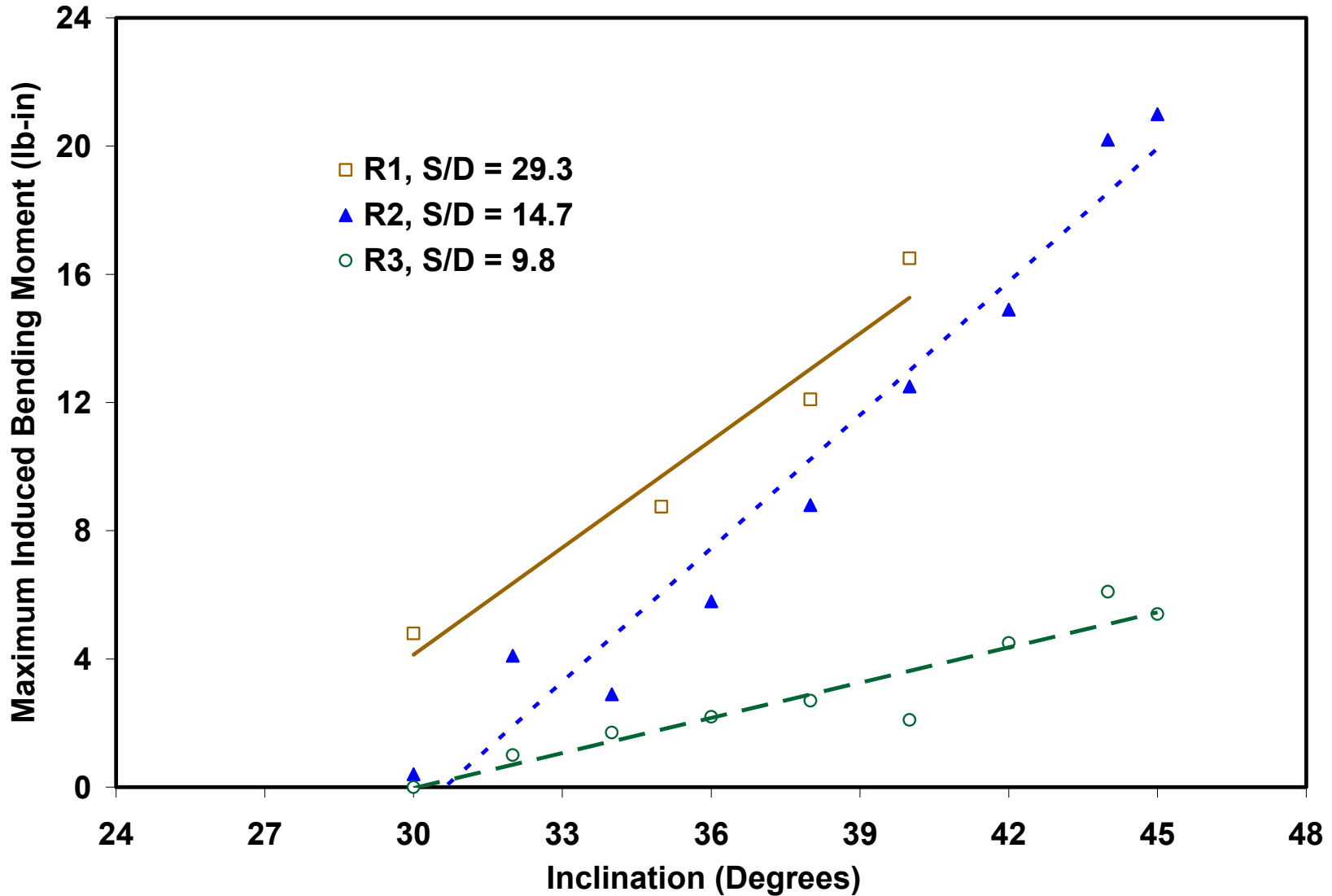
Interpretation of Results



Moment Distribution

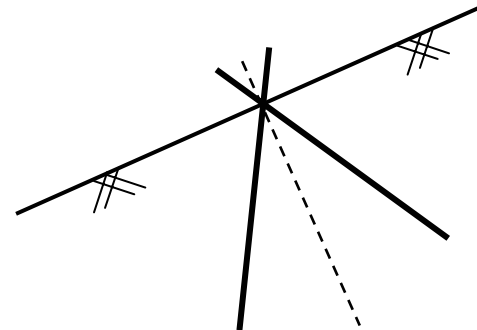
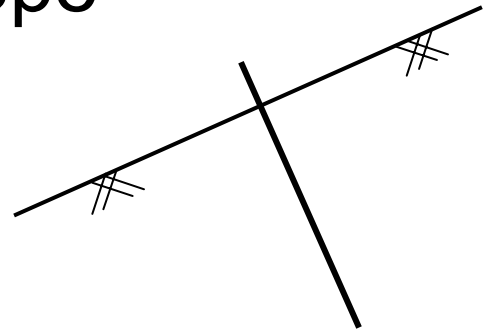


Load Transfer



Completed Testing

- Unreinforced models
- Single Line, Perpendicular to Slope
 - s/d from 8 to 30
 - “rigid” and scaled members
- Single Line, A-Frame
 - s/d from 4 to 8
 - No cap beam



Future Testing

- A-frame arrangement with capping beam
- Reticulated micropile
- Larger scale device



Observations

- Tests performed for unreinforced slopes indicate modeling errors are small
- Model micropiles reasonably representative of field scale micropiles
- Mobilization of resistance is roughly linear
- Capping beam necessary for conditions tested to date



Acknowledgements

- Funding provided by U.S. National Science Foundation, Grant CMS0093164

